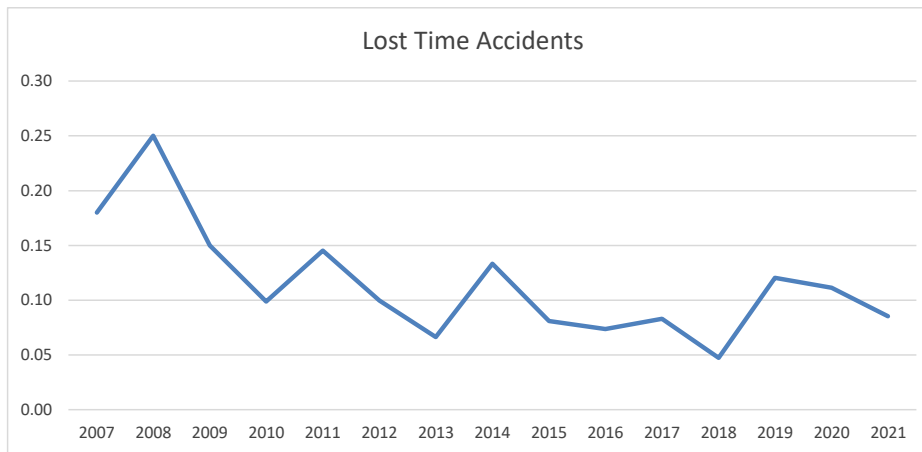




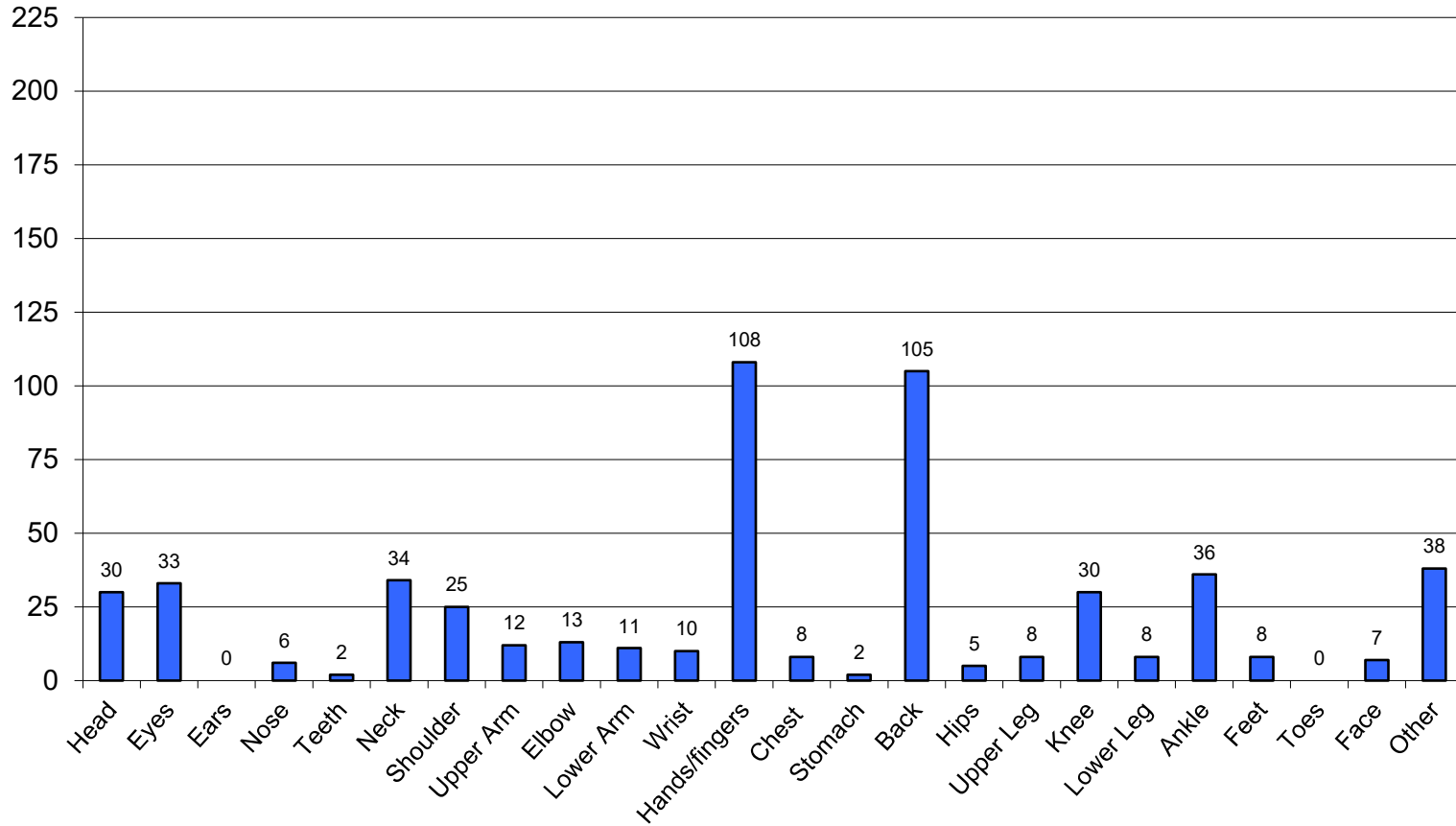
Injury Statistics
For Period January 1 to December 31, 2021

	Total Hours	First Aids	First Aid Frequency	Medical Aids	Medical Aid Frequency	Lost Time Accidents	LTA Frequency	Reordable Injury	RI Frequency
31-Mar-21	10,879,051	115	2.11	30	0.55	8	0.15	38	0.70
30-Jun-21	10,523,581	87	1.65	17	0.32	3	0.06	20	0.38
30-Sep-21	10,233,482	102	1.99	18	0.35	4	0.08	22	0.43
31-Dec-21	8,185,540	97	2.37	24	0.59	2	0.05	26	0.64
Total	39,821,654	401	2.01	89	0.45	17	0.09	106	0.53

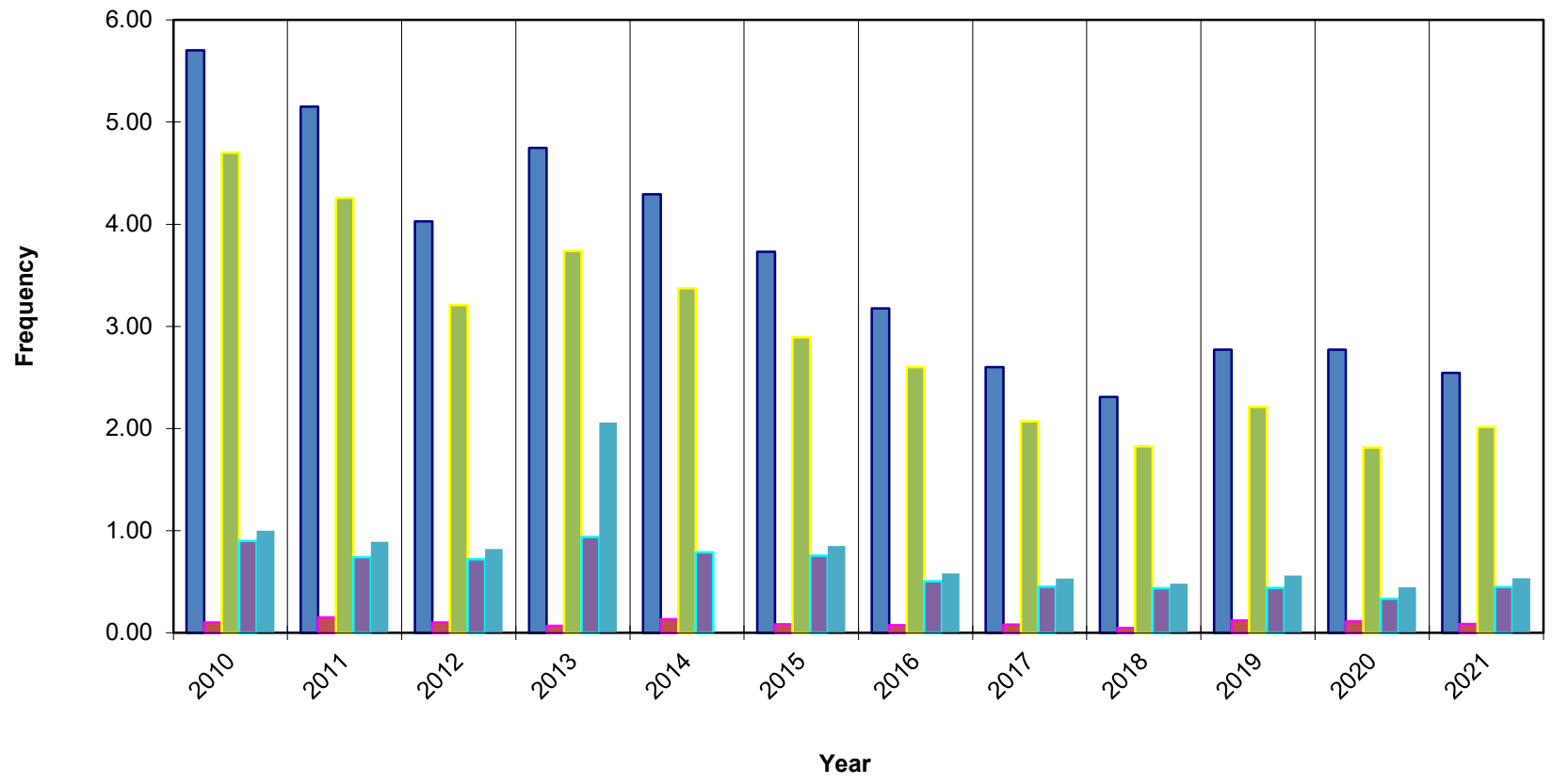


<u>Year</u>	<u>LTA</u>	<u>Total Hours</u>
2007	0.18	n/a
2008	0.25	19,196,018
2009	0.15	23,738,119
2010	0.10	30,338,813
2011	0.15	26,137,258
2012	0.10	31,875,980
2013	0.07	30,074,250
2014	0.13	31,483,021
2015	0.08	32,129,326
2016	0.07	35,310,278
2017	0.08	38,505,182
2018	0.05	44,281,882
2019	0.12	43,201,115
2020	0.11	39,499,510
2021	0.09	39,821,654

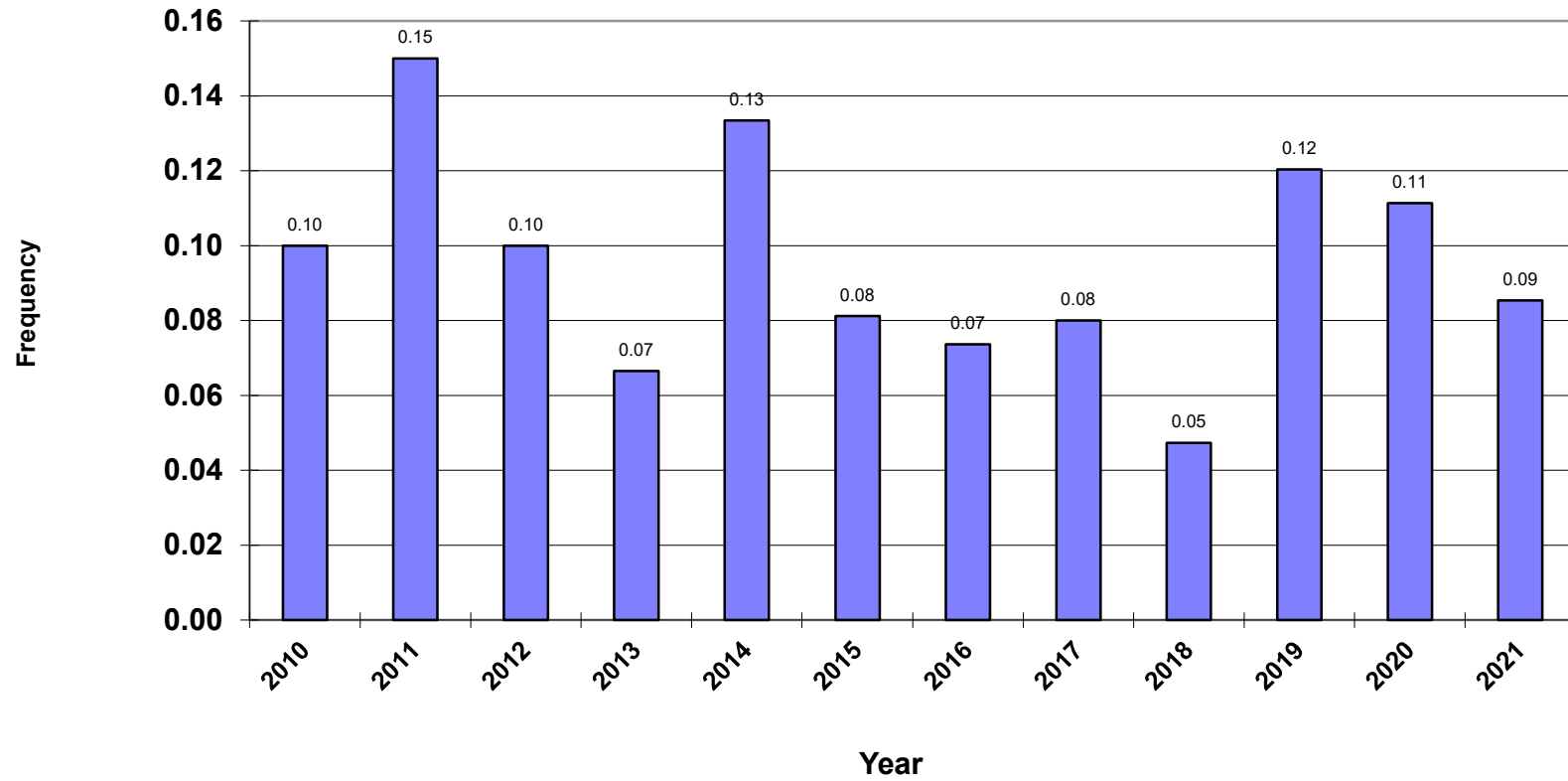
AMSA Injury Type Survey Period January 1 to December 31, 2021



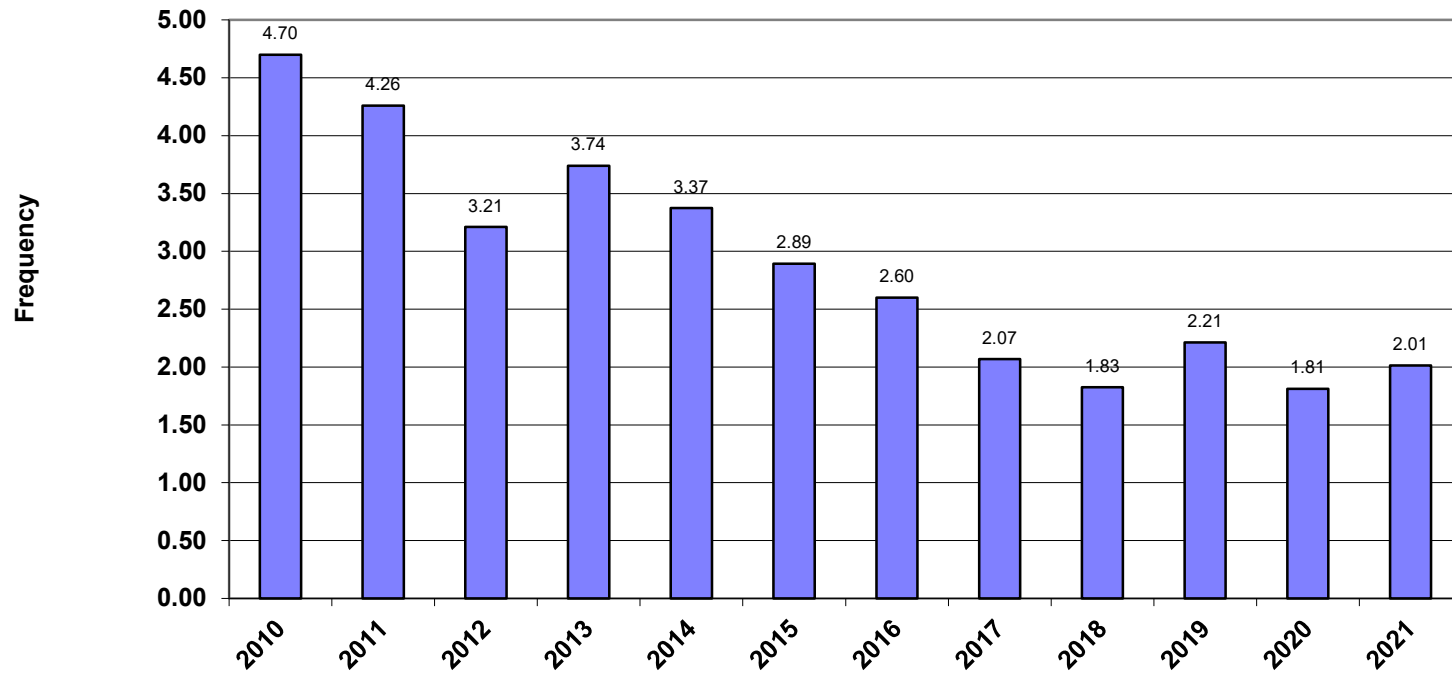
Alberta Mine Safety Association Frequency Comparison 2010 to 2021



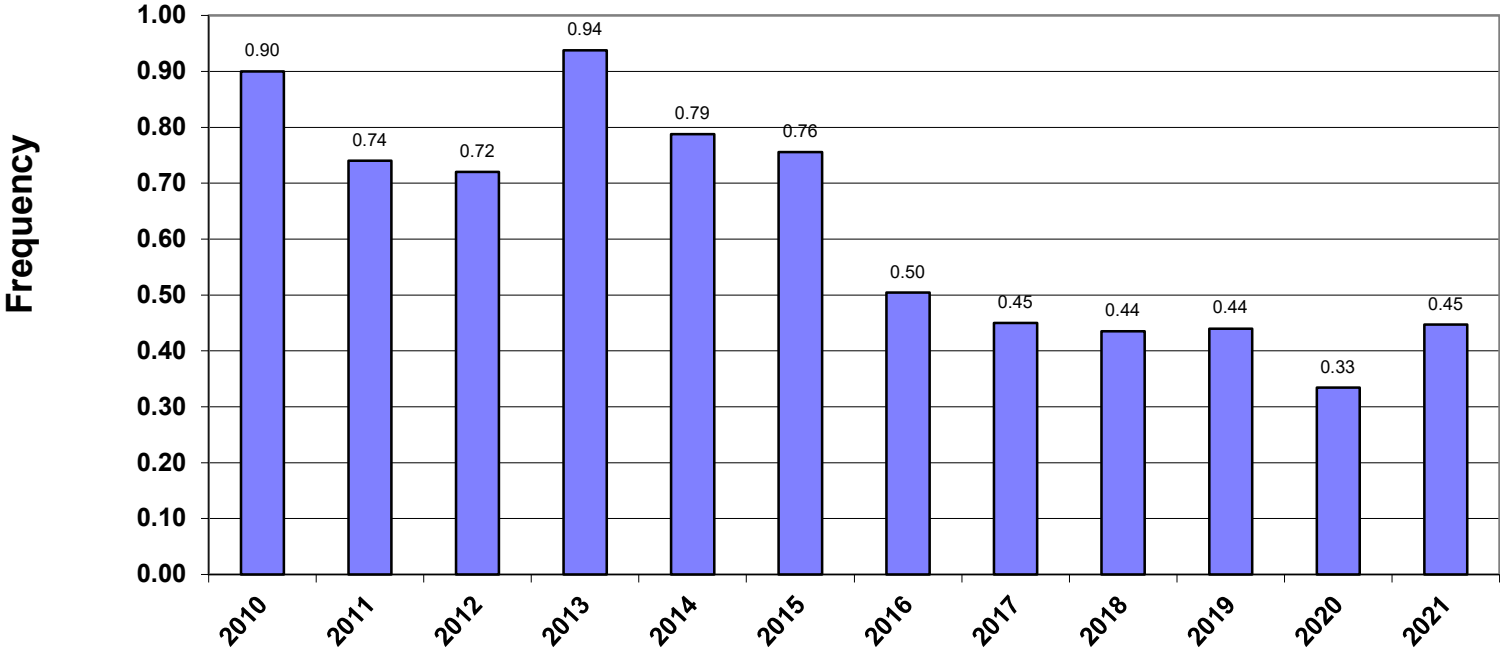
Alberta Mine Safety Association Lost Time Accident Frequency 2010 to 2021



Alberta Mine Safety Association First Aid Frequency 2010 to 2021



**Alberta Mine Safety Association
Medical Aid Frequency
2010 to 2021**



**Alberta Mine Safety Association
Recordable Injury Frequency
2010 to 2021**

