



## Alberta Mine Safety Association

### Injury Statistics

For Period January 1 to December 31, 2017

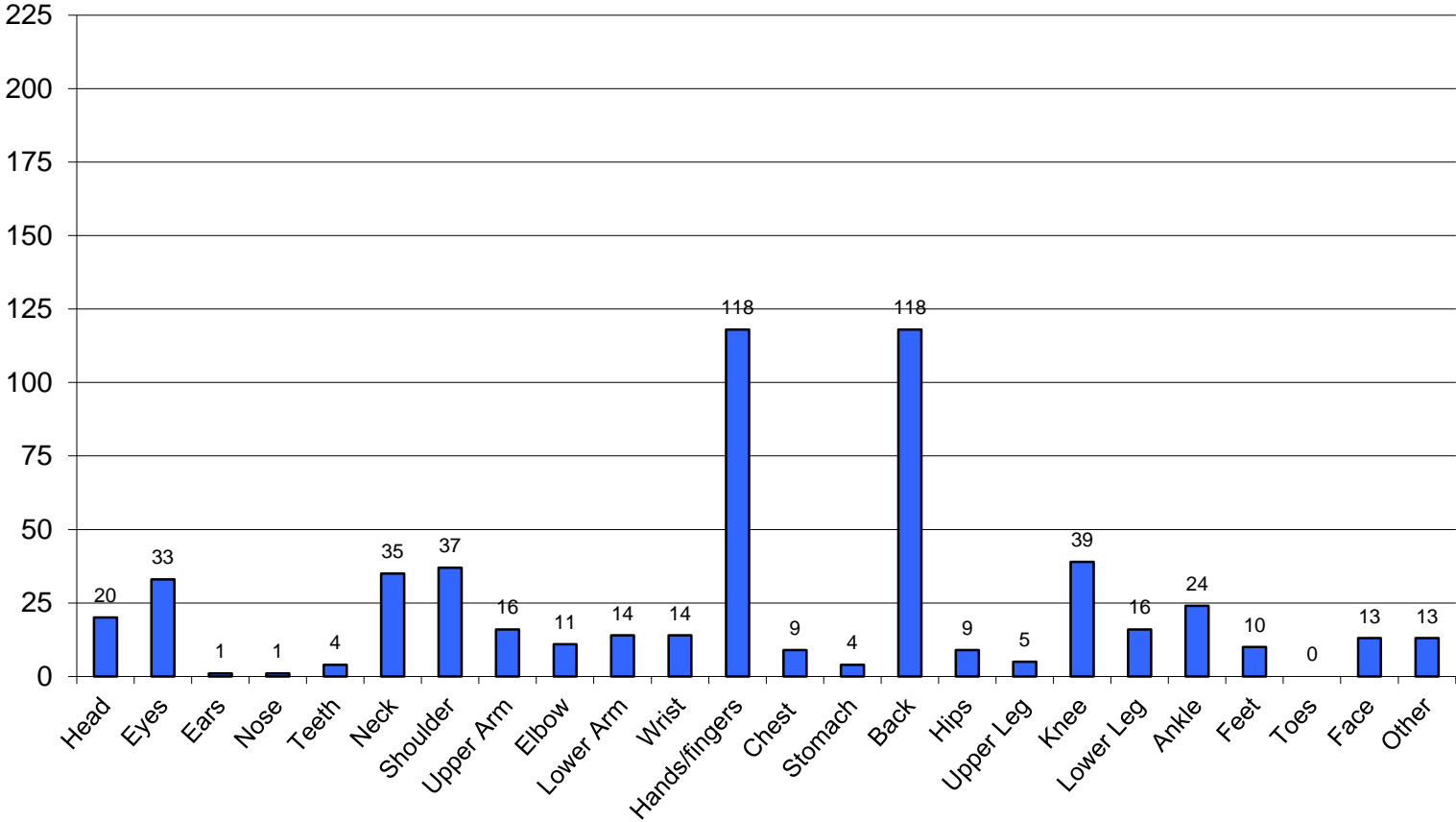
Combined Totals

	<b>Total Hours</b>	<b>First Aids</b>	<b>First Aid Frequency</b>	<b>Medical Aids</b>	<b>Medical Aid Frequency</b>	<b>Lost Time Accidents</b>	<b>LTA Frequency</b>
31-Mar-17	10,031,366	81	1.61	29	0.58	6	0.12
30-Jun-17	9,345,875	118	2.53	17	0.36	4	0.09
30-Sep-17	9,279,152	97	2.09	21	0.45	3	0.06
31-Dec-17	9,848,790	102	2.07	20	0.41	3	0.06
<b>Total</b>	<b>38,505,182</b>	<b>398</b>	<b>2.07</b>	<b>87</b>	<b>0.45</b>	<b>16</b>	<b>0.08</b>

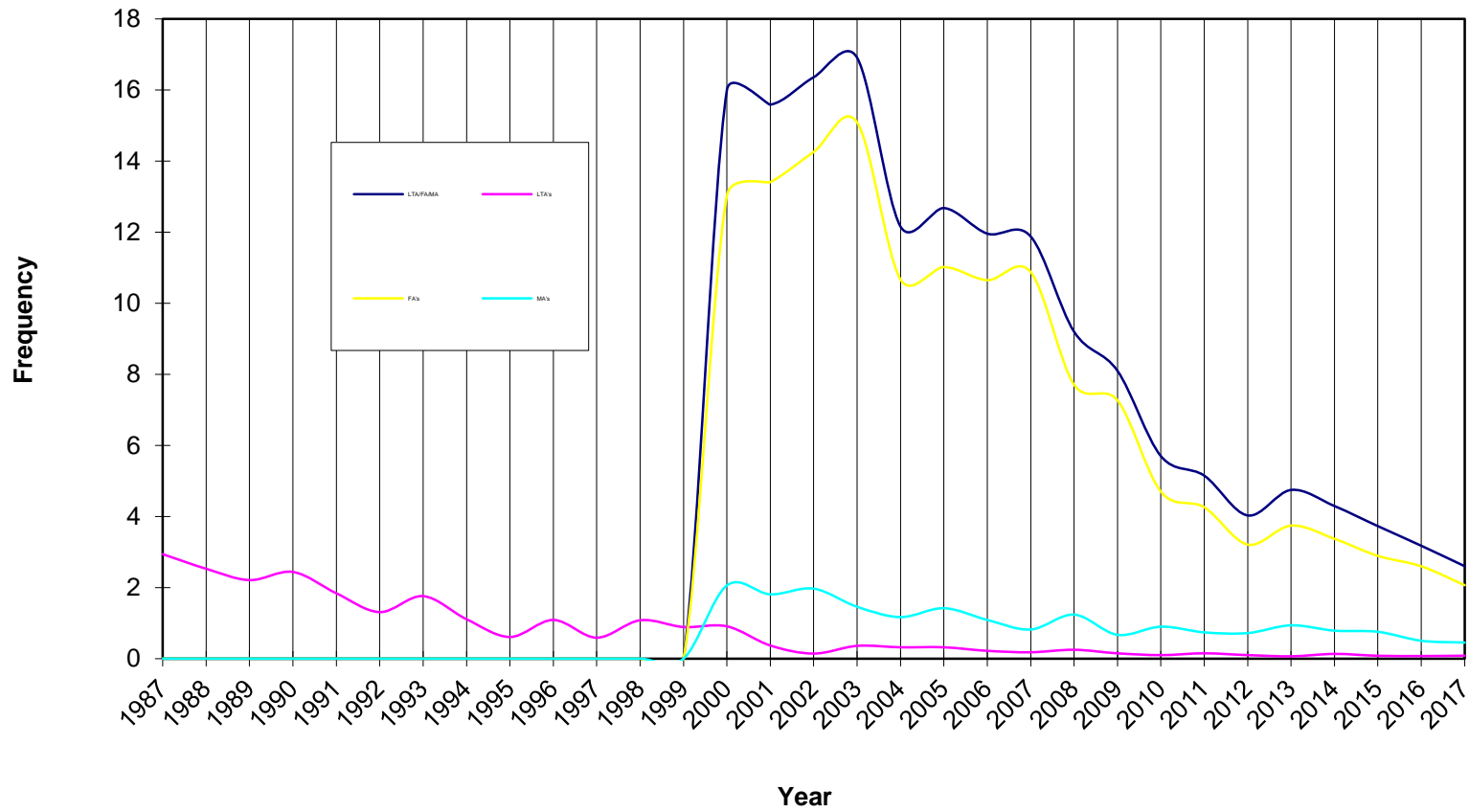
#### Historical

2016	0.07
2015	0.08
2014	0.13
2013	0.07
2012	0.10
2011	0.15
2010	0.10
2009	0.15
2008	0.25
2007	0.18

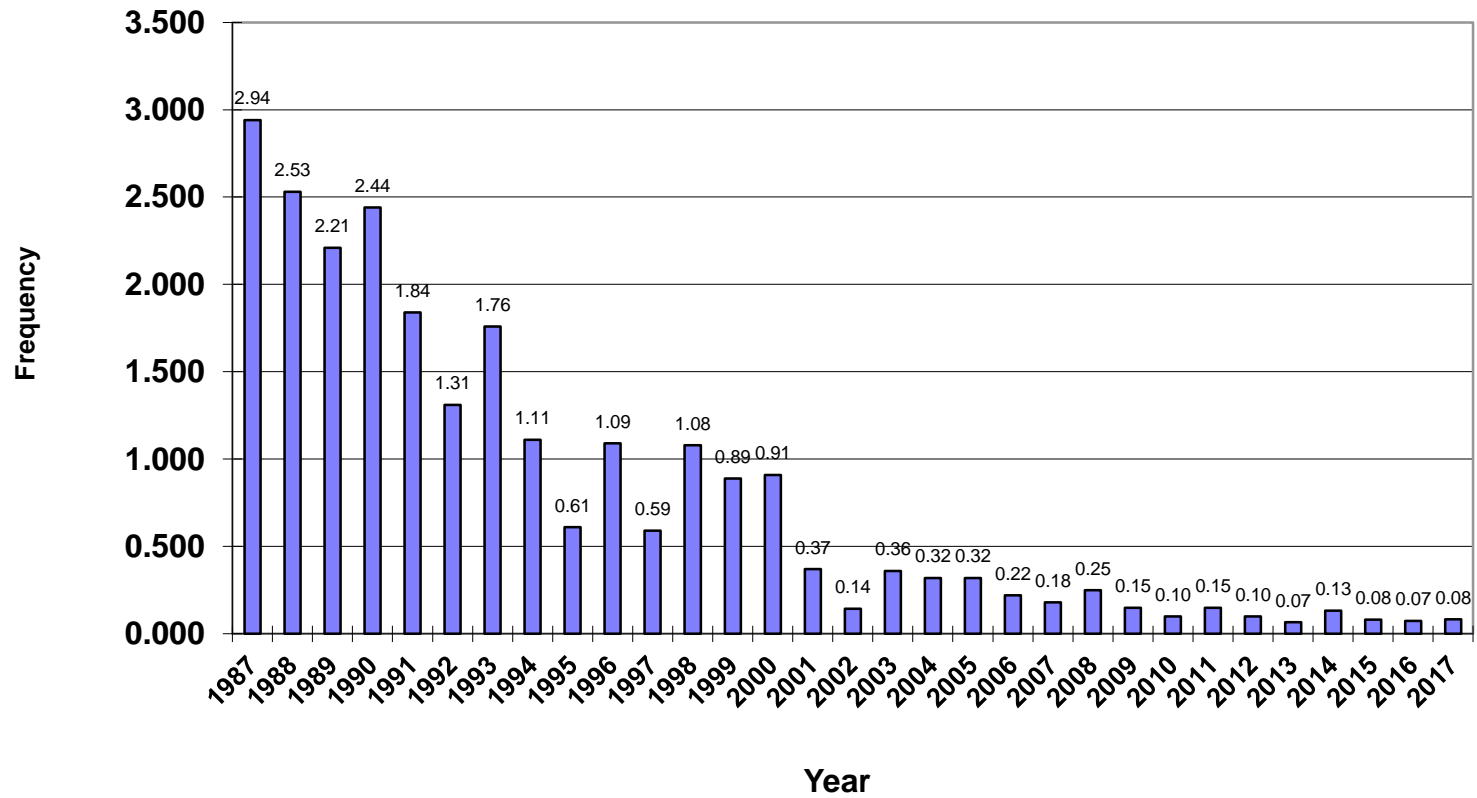
### AMSA Injury Type Survey Period January 1 to December 31, 2017



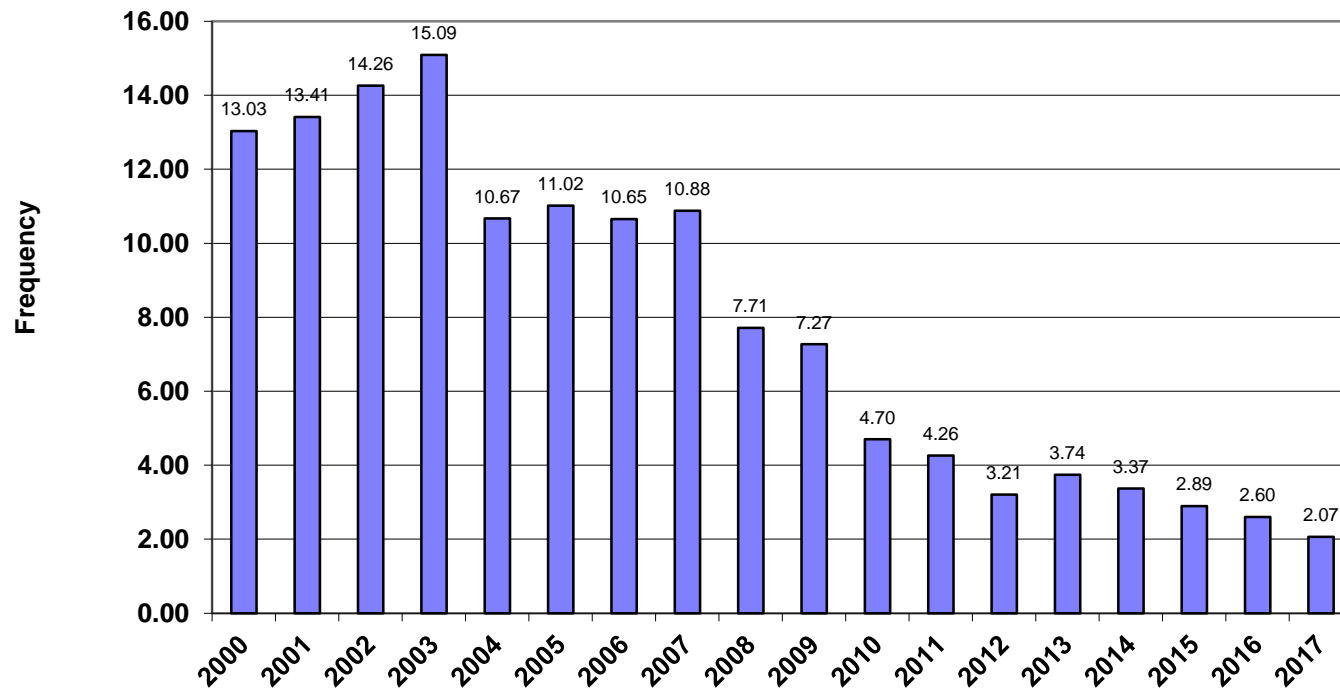
### Alberta Mine Safety Association Combined Comparison 1987 - December 31, 2017



**Alberta Mine Safety Association  
LTA Frequency Comparison  
1987 - December 31, 2017**



### Alberta Mine Safety Association First Aid Frequency Comparison 2000 - December 31, 2017



**Alberta Mine Safety Association  
Medical Aid Frequency Comparison  
2000 - December 31, 2017**

