



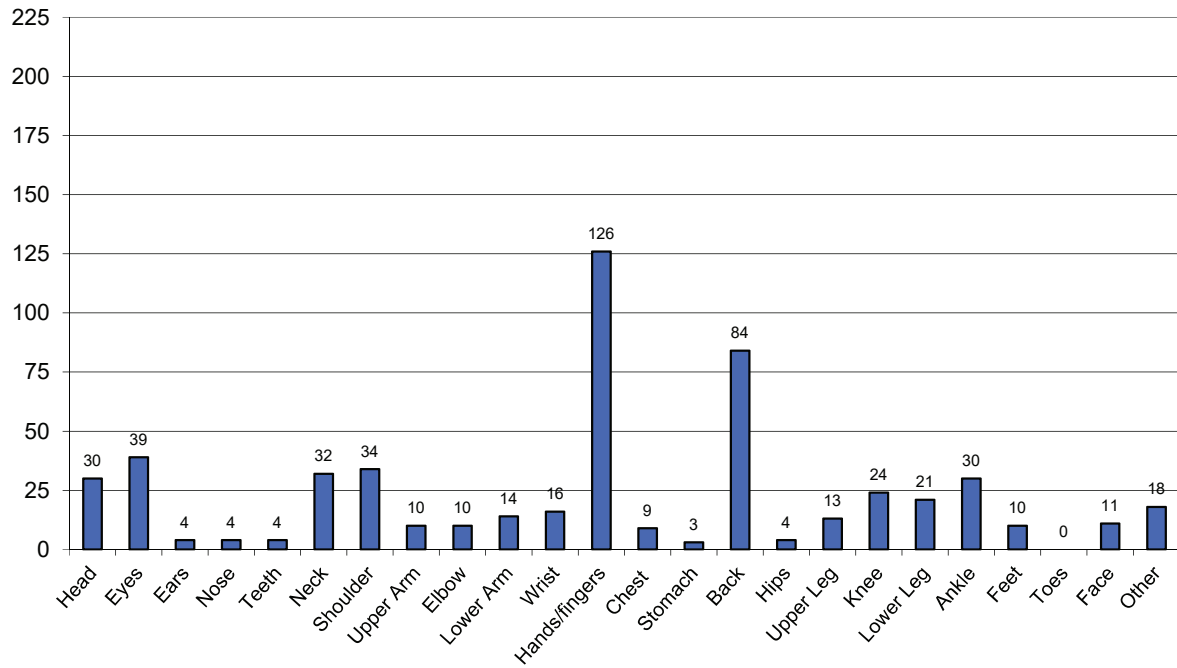
Injury Statistics
For Period January 1 to December 31, 2018

	Total Hours	First Aids	First Aid Frequency	Medical Aids	Medical Aid Frequency	Lost Time Accidents	LTA Frequency
31-Mar-18	11,055,923	98	1.77	32	0.58	2	0.04
30-Jun-18	10,513,620	97	1.85	15	0.29	5	0.10
30-Sep-18	10,132,934	90	1.78	24	0.47	1	0.02
31-Dec-18	10,563,813	101	1.91	21	0.40	2	0.04
Total	42,266,289	386	1.83	92	0.44	10	0.05

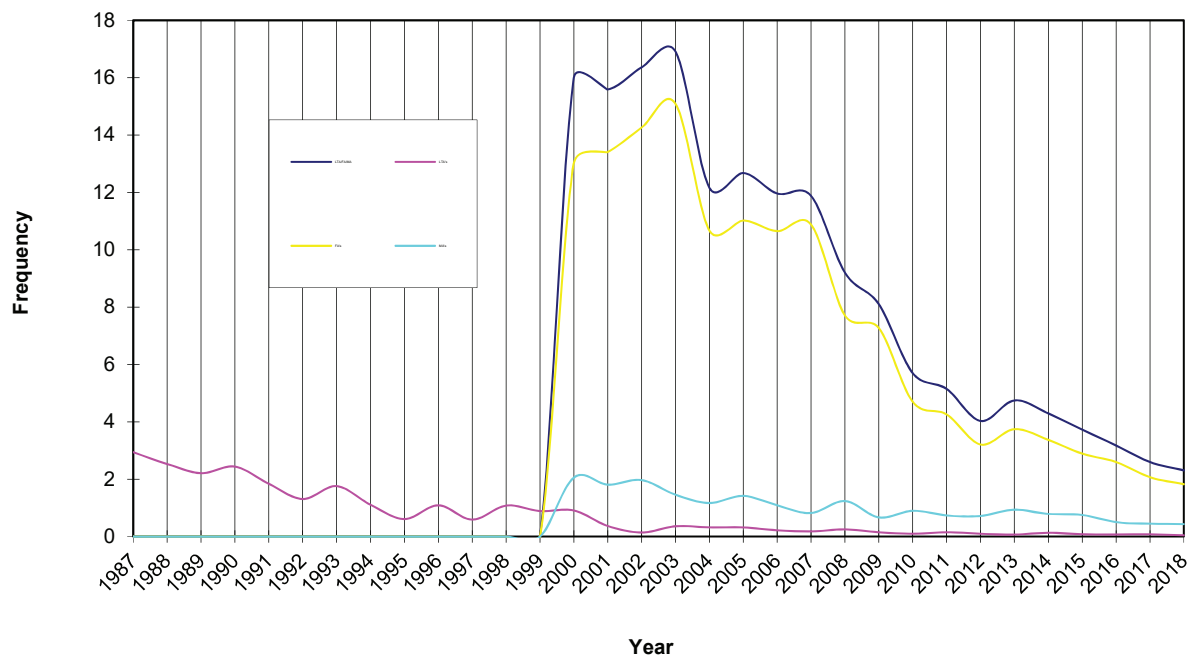
Historical

2017	0.08
2016	0.07
2015	0.08
2014	0.13
2013	0.07
2012	0.10
2011	0.15
2010	0.10
2009	0.15
2008	0.25
2007	0.18

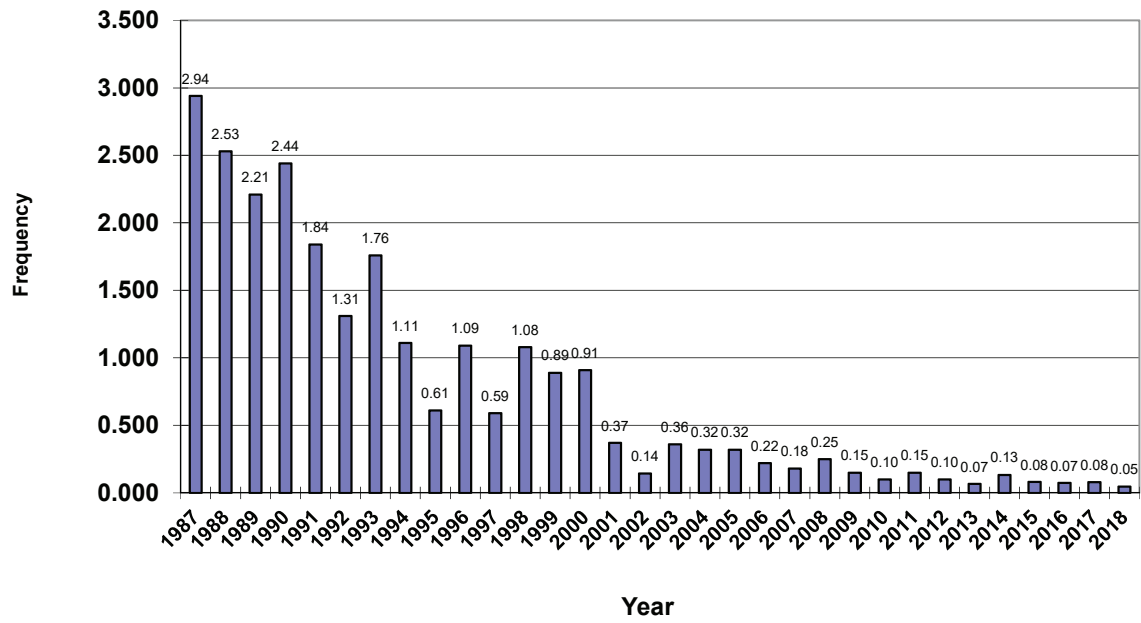
AMSA Injury Type Survey Period January 1 to December 31, 2018



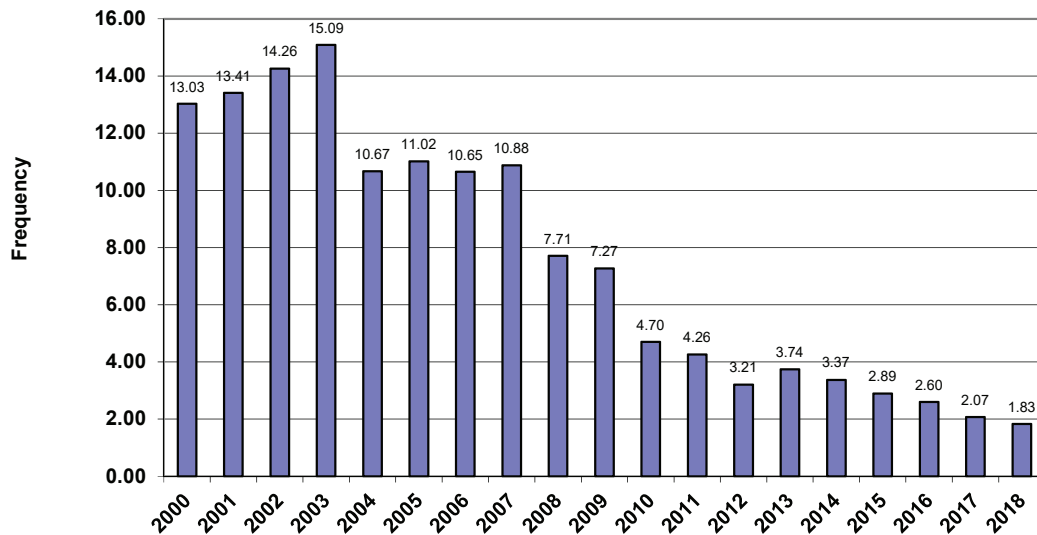
Alberta Mine Safety Association Combined Comparison 1987 - December 31, 2018



**Alberta Mine Safety Association
LTA Frequency Comparison
1987 - December 31, 2018**



**Alberta Mine Safety Association
First Aid Frequency Comparison
2000 - December 31, 2018**



**Alberta Mine Safety Association
Medical Aid Frequency Comparison
2000 - December 31, 2018**

